



alpheno[®]
Rendez-vous with the future!

To create your future, you need the right partner.

alpheno[®] – personal – unparalleled – ground breaking



alpha

a WITTENSTEIN AG company

alpheno® is innovation

We invite you into a partnership built on innovation and development.

alpheno® creates unprecedented possibilities and opens a world of dynamic power for the development of your project.



Support and Engineering



During the development stages of an application, communication and cooperation are vital.

Benefit from our extensive experience, the unparalleled competence of our highly qualified team and the superior service of **WITTENSTEIN engineering**.

Together with you, we can develop your optimal motion control solution.

Creating together!



Production and Assembly

Modern processes and qualified personnel guarantee the highest quality.

Two partners, one vision



alpheno® means partnership

We work towards fostering a personal relationship with our customers built on trust and mutual values.

Working together with you, we develop a future focused on solutions for the requirements of a constantly evolving market.

Emerging from close communication is a partnership of success.

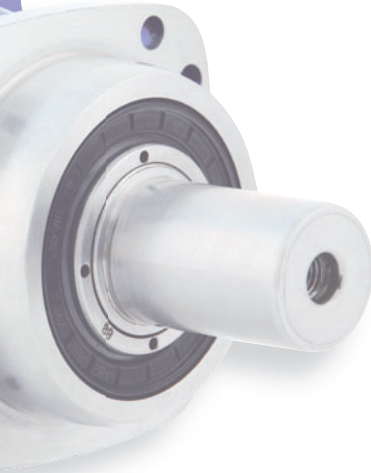
Global Distribution and Service



Simply put, we are where you need us:

A worldwide sales and service network is working to provide you with rapid response and dedicated service.

Our professional contacts are local to you, always ready to provide answers to your questions.



Your personal alpheno®

inspired by



alpha

Your requirements ...

Are you asking questions which require reliable and credible solutions?



How do I ...

- reduce costs?
- quicken time to market?
- increase reliability?
- improve quality?
- boost capacity and productivity?
- differentiate from competitors?
- enhance market position?

... become our results!

alpheno®

reduces your cost by:

- minimising engineering investment
- shortening development time
- condensing building space requirements

increases your profit by:

- raising productivity
- lowering unit costs
- improving quality

secures your market by:

- individualising on technical innovation
- strengthening on credibility
- intensifying on competitive advantages



Your personal alpheno®

inspired by



alpha

alpheno® – Clear customer benefits

alpheno[®] – personal

Looking for a solution custom designed to suit your requirements?

Working with you, we strive towards developing a personal solution geared towards optimising the design of your drives.



When millimetres matter, everything has to be perfect.

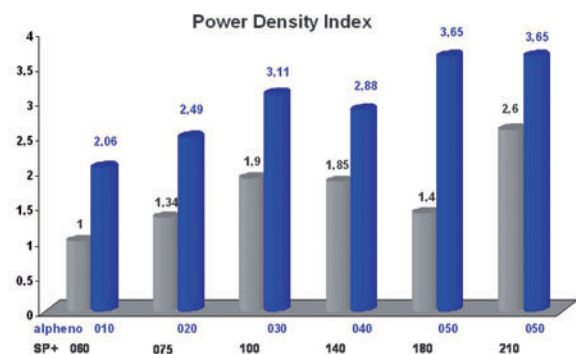
Looking for more power in less space? This comes as standard in the most compact design.

alpheno[®] – the advantages of miniaturisation will amaze you!



alpheno[®] – Your individual innovation

- when your drive demands compactness
- when your machine must deliver more productivity
- when customized solutions are required



Comparison power density: the industry standard versus **alpheno[®]**

alpheno[®] – Dynamic power in a compact package

alpheno® – unparalleled

Looking for all the right answers to be in all the right places?

We create detailed, comprehensible documentation specific to your project and complete with all the information you need, from process to calculations data.

With this personal solution for your requirements, we carry the responsibility of ensuring technological developments on your project.



alpheno® – Your clear perspective

Your personal documentation will be provided to you in a concise manner – all the pertinent information on just a few pages. We provide these valuable documents to you in both digital and print formats to best suit your means.



| Cover Page | Contents | Project Objectives | Requirements | Applications Data |
|---------------------|-------------------|--------------------|--------------|-------------------|
| | | | | |
| | | | | |
| Calculation Results | Customer Benefits | Drawings | „we care“ | Personal Contacts |

alpheno® – Individual from every angle

alpheno® – ground breaking

Are you looking for a permanent partnership?

Give us your challenge and we will create astounding benefits.
Discover our excellence!
Together we can increase your competitive advantage and secure the future of your success.

alpheno® – your partner for the future!

alpheno® is quality

We define quality as an active philosophy.
Only a thorough Quality Management System with the most modern measuring and testing methods ensures total quality control.



alpheno® is reliability

We guarantee the quality and reliability of our **alpheno®** with 100% exit testing.

All data is documented in the **alpheno®** quality certificate.

alpheno® is innovation

We work towards developing vision and value together.

It is no surprise that alpha was chosen as the most innovative medium-sized company in Germany.



alpheno® – the sure way to success

Your personal **alpheno®**



alpha – Next to you globally

Australia · Austria · Argentina · Belgium · Brazil · Canada · China · Croatia · Czech Republic · Denmark · Egypt · Finland · France · Germany · Greece · Hungary · India · Israel · Italy · Japan · Korea (Republic) · Luxembourg · Malaysia · Mexico · Norway · Poland · Portugal · Puerto Rico · Russia · Singapore · South Africa · Spain · Sweden · Switzerland · Taiwan · Thailand · The Netherlands · Turkey · United Kingdom · United States of America



alpha getriebebau GmbH
Walter-Wittenstein-Str. 1
97999 Igersheim · Germany

Phone +49 7931 493-0
Fax +49 7931 493-200
info@alphagetriebe.de
www.alphagetriebe.de



alpha

a **WITTENSTEIN AG** company